

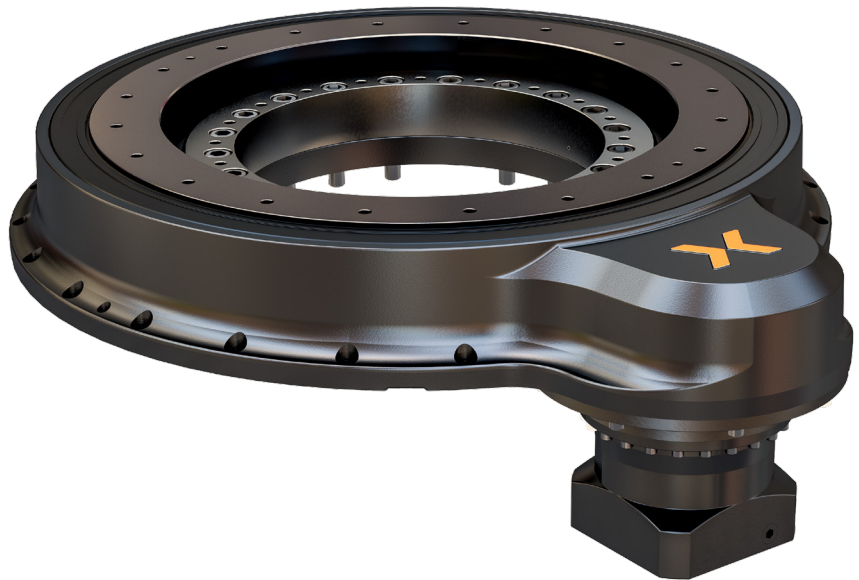
nexen

CRDX550-PL

Rotary Indexer

Based on Nexen's established Compact Precision Ring Drive (CRD), the new CRDX550-PL delivers up to three times more torque and 4.5 times moment load capacity in a compact package.

The CRDX550-PL is built on a rigid, sealed cast iron housing that completely encloses the gear and pinion. A pre-installed low-backlash planetary gearhead is used to drive the pinion, delivering exceptional accuracy.



Key Features

- Utilizes new RPS32 Pinion with optimized pinion bearings
- Torque up to 3528 Nm peak
- Through Hole 340 mm ID
- Output Bolt Circle 550 mm
- Accuracy ± 30 ArcSec
- Axial loading up to 1,050 kN
- Moment loading: up to 22.5 kNm
- Ratios from 22:1 to 1650:1
- IP65 Rated

Industries & Applications

- Cutting Systems
- Gantry Systems
- Medical Products
- Robotics
- Aerospace
- Machine Tool
- Semiconductor
- Material Handling

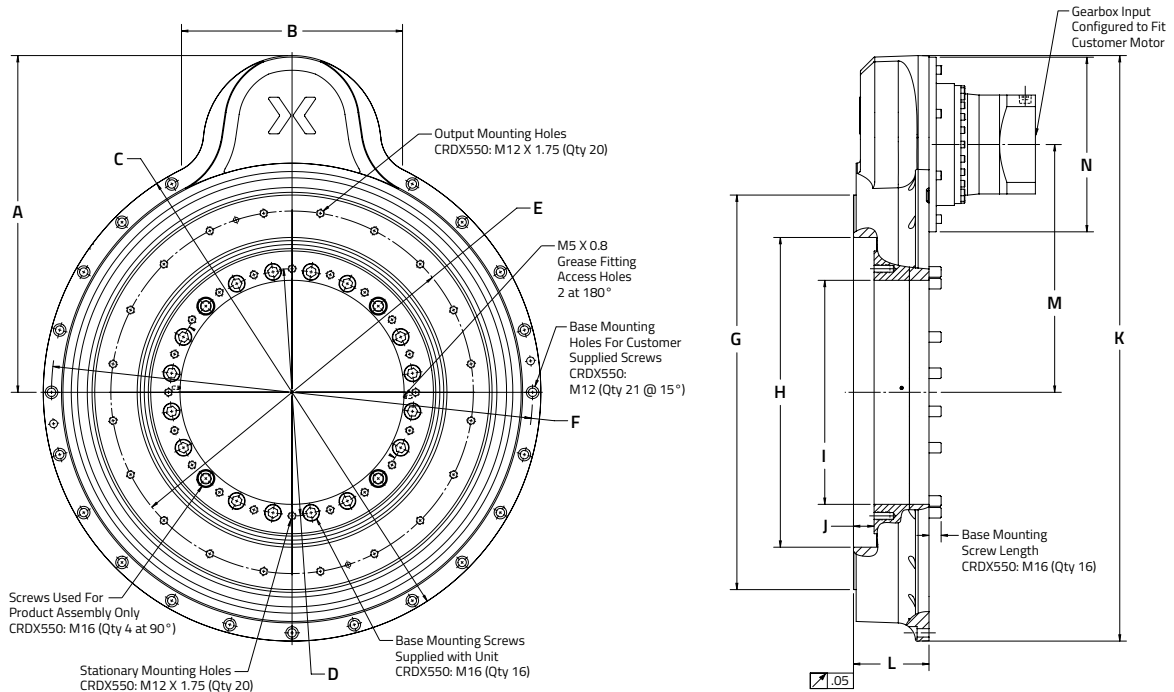
The **X** Line

CRD550-PL & CRDX550-PL Performance Specifications

	Maximum Velocity	Max Continuous Velocity	One-Way Positional Accuracy	One-Way Repeatability	Max Backlash	Max Acceleration Torque	Nominal Torque	Gear/Pinion	Input to Output	Sealed Housing	Unloaded Drag Torque	Output Inertia	Total Reflected Inertia to Gearbox Output
	RPM	RPM	±ArcSec	±ArcSec	ArcSec	Nm	Nm	Ratio	Ratio	IP65	Nm	kgm ²	kgm ²
CRD550-PL	120	79*	27	3.3	9.4*	1066	697	8.2:1	32.8:1*	yes	135	4.6	0.0709
CRDX550-PL	120	86*	30.4	3.2	13*	3528	2016	5.5:1	22:1*	yes	135	6.604	0.2351

*Assumes a reduced backlash 4:1 planetary gearbox

CRDX550-PL Dimensions



A	B	C	D	E	F	G	H	I	J	K	L	M	N
Drive Station Envelope to Center Distance	Drive Station Envelope Width	Outer Diameter	Stationary Bolt Circle Diameter	Output Bolt Circle Diameter	Base Mounting Hole Circle Diameter	Output Outer Diameter	Output Inner Diameter (H7)	Inner Diameter	Depth to Stationary Ring	Overall Length	Unit Height	Drive Station Center to CRD Center - PL	Drive Station & Adapter Width - PL
511 mm	335.4 mm	754.9 mm	375 mm	550 mm	730 mm	598.7 mm	470 mm	340 mm	31.2 mm	888.5 mm	114.5 mm	376 mm	265 mm

nexen

Nexen Group, Inc.

560 Oak Grove Parkway | Vadnais Heights MN, 55127

info@nexengroup.com | www.nexengroup.com | (800) 843-7445

In accordance with Nexen's established policy of constant product improvement, the specifications contained in this document are subject to change without notice. Technical data listed in this document are based on the latest information available at the time of printing and are also subject to change without notice. For current information, please consult www.nexengroup.com or contact Nexen's Technical Support Group.

©2023 Nexen Group, Inc.

21330-A-0723